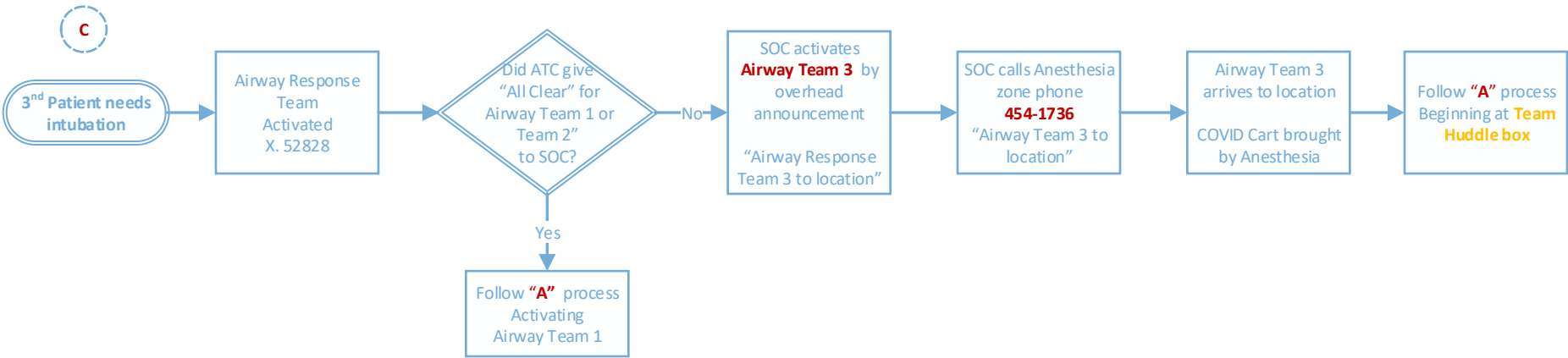
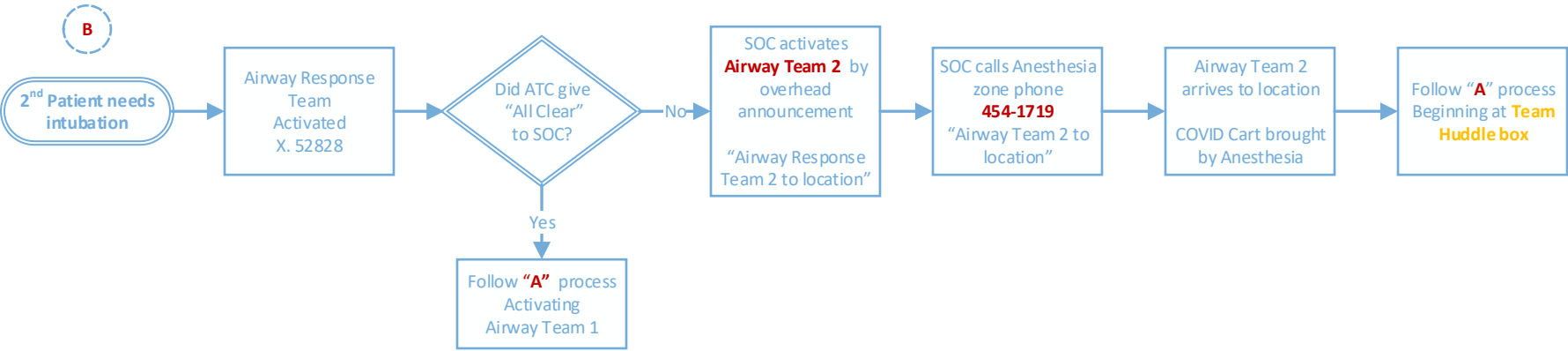
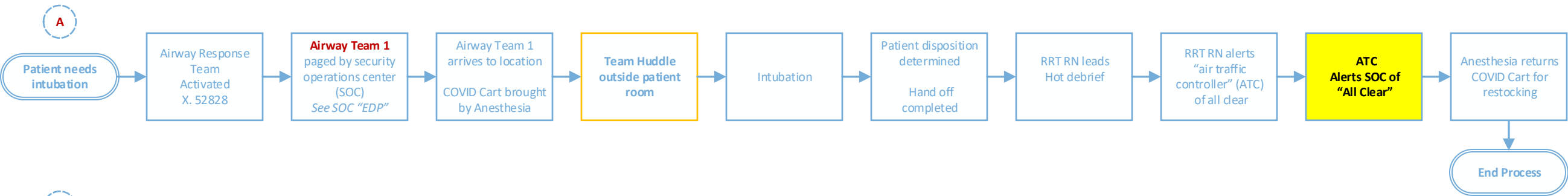


FMLH COVID-19 Airway Response Team Surge Plan

FINAL



- Airway Team 1**
1- Anesthesia Attending + PACU Resident
1-RRT RN or (1-ICU CN for ICUs only)
1-RT
1-Pharmacist
1-MICU resident
1-TICU ICU
- Airway Team 2**
1- Anesthesia Attending + CRNA
1-CRNA
1-RT
1-RRT RN
1-Pharmacist
- Airway Team 3**
1- Anesthesia (AIC)+ CRNA
1-CRNA
1-RT
1-RRT RN (if available)
1-Pharmacist
- *Green in the room*
**Blue out of room unless told otherwise*

- Air Traffic Controller (ATC) zone phone 454-1712**
- Role assigned to a RRT RN 24/7
 - Communicates "all clear" messaging to SOC
 - Nurse Liaison with C3 MICU physician
 - Alerts MICU Charge RN if unable to attend MERT/ART activations
 - Supports triaging of RRT RN team members

- Critical Care Coordination (C3) 24/7 MICU attending assigned**
Zone phone 454-1741
- Clinical Pathways, clinical decision making r/t COVID patients
 - If resources become scares, guides allocation
 - Patient placement r/t COVID patients
 - Outside ICU referrals/transfers
 - Activation/oversight of surge staffing plans for MDs & APPs
 - Provider liaison to FMLH branch incident command

- COVID Cart**
- Inventory of 3 COVID carts + 1-back-up
 - Stocked and maintained by Anesthesia Techs (805-1590)
 - Contains necessary equipment/supplies for intubation & PPE
 - Anesthesia brings cart to all airway calls